

## Financial Planning Professional (FPP) 2018.1 Download Installation Instructions

### I. System Requirements

To run Financial Planning Professional, you will need the following system configuration:

1. Microsoft® Windows 2000 or Windows XP
2. 52 MB available hard disk space (before installation)
3. Internet access

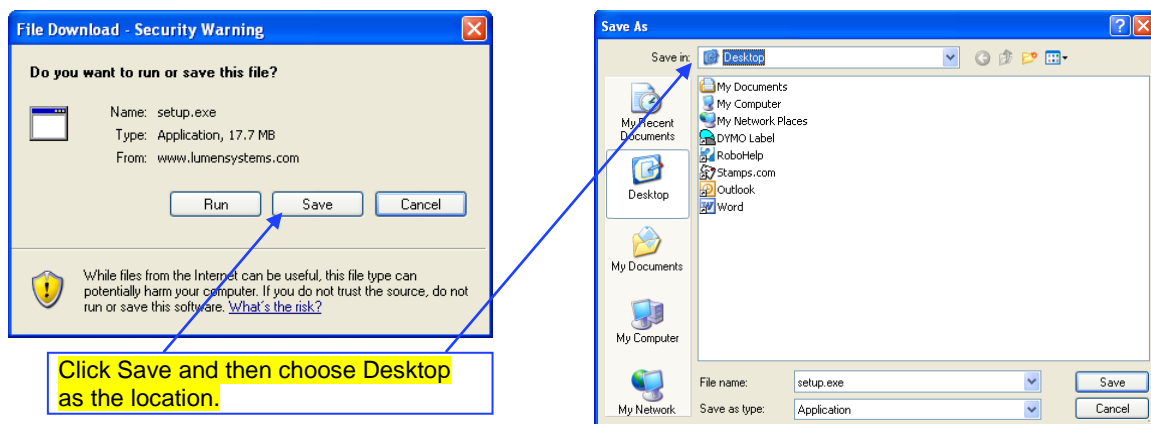
### II. Before Installing FPP 2018.1:

- ❖ Before installing FPP 2018.1, decide whether you will complete your current case(s) using your current version of FPP or the 2018.1 update. If you don't want the new changes for 2018.1 to affect an unfinished case, complete it prior to installing FPP 2018.1. If you do want the new changes to be included in a case, install the update and then complete that case.
- ❖ Install FPP 2018.1 into the same directory that is being used for the current version.
- ❖ Delete the old FPP icon on your desktop.



### III. Install the FPP Software and License

1. Connect to the Internet and then minimize your browser window.
2. Open the email message from Lumen Systems, Inc. containing the hyperlink for downloading the FPP software. Click on the link.
3. The File Download screen that appears will ask you to open or save the software you are downloading. We strongly recommend that you save the setup.exe file to your desktop for easy access.
4. Double click on the setup.exe icon on your desktop. (If you saved the setup.exe file to another location, access the setup.exe file by right clicking Start and then selecting Explore. Choose the drive and then folder where the setup.exe file is located and then double click on the setup.exe file.)

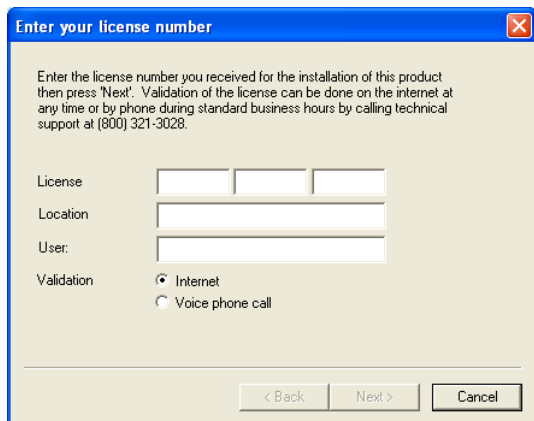


**NOTE:** IF YOU HAVE WINDOWS 10 INSTALLED ON YOUR COMPUTER YOU MAY GET AN ERROR MESSAGE 2502 OR 2503. If that error message has been generated it is

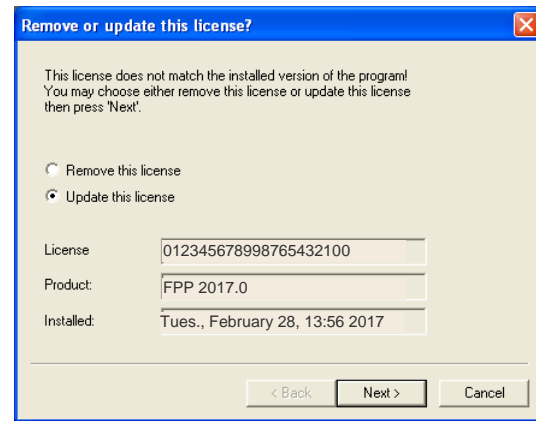
because the setup.exe needs to be run with admin rights. (i.e. right click the .exe and select “Run as Administrator”). Uninstalls need to be run the same way. Right click on the setup.exe. Run as administrator then tell it to remove. Removing from the control panel does not work when these errors occur.



5. The FPP InstallShield Wizard opens. Click “Next” to install FPP on your computer.
6. Fill in the requested information in each window and then click “Next”. When the InstallShield Wizard is complete, click “Finish”.
7. If you are installing FPP for the first time, the “Enter your license number” window appears after you open FPP. If you are installing an updated version of FPP, the “Remove or update this license?” window opens.



First-time installation



Update installation

8. For first-time installations, enter the requested information and click “Next”. For updates, choose “Update this license”, confirm the information, and click “Next”.
9. When the installation is complete, delete the setup.exe icon from your desktop.

After installing FPP, you can create a shortcut to the program and place it on your desktop. Select Start→All Programs→Lumen FPP→FPP. Right click on FPP, click on Send To. Then choose Desktop (create shortcut).

**NOTE:** Windows allows you to mark an application so that it always runs with administrator privileges.

To mark an application to always run as an administrator, do the following:

1. On the Start menu, locate the program that you want to always run as an Administrator.
2. Right-click the application's shortcut, and then click Properties.
3. Click on the Shortcut Tab, and then click on the Advanced button.
4. Put a checkmark in the box for Run as Administrator, click OK and click Apply.

The application will now always run using an administrator access token. Keep in mind that if you are using a standard account and prompting is disabled, the application will fail to run.

**NOTE** If the Run this program as an administrator option is not available, it means the application is blocked from always running at an elevated level, the application does not require administrator credentials to run, the application needs to be run as an administrator in compatibility mode, or you are not logged on as an Administrator.

If you would like assistance installing FPP 2018.1 or have any questions regarding the program or how it functions, you can email Tech Support at [support@lumensystems.com](mailto:support@lumensystems.com).